



SOL BANYAN GRANDE

C A N D O L I M

Corporate Office: Sun Estates Developers,
Next to "Sol de Goa", Near Bank of India, Bhatiwado, Nerul, Bardez, Goa, India 403114

+91-9881789992 / +91-9767481349 / +91-9552560990 / +91- 9823038923 / +91 832 6714128

sales@sunestates.com | www.sunestates.com

A HEAVEN FILLED
WITH SERENE,
ETERNAL RAPTURE

SOL BANYAN GRANDE

LUXURY APARTMENTS IN CANDOLIM

These are the homes that lie amidst a perfect amalgamation of heritage and nature. They offer one of the rarest privileges of becoming a part of a heaven that carries with it an inherent sense of elegant comforts and a classic insignia of richness.



WELCOME TO THE PARADISE
SOL BANYAN GRANDE



Sol Banyan Grande



LIFE BETWEEN THE OCEAN
AND LUSH GREENERY

A PARADISE FOR
THOSE WHO
LOVE THE BLEND
OF PEACE AND
EXPLORING

HOMES BUILT FOR THE PASSIONATE SOULS

The true spirit of Goa lies in its ability to bring a sense of serene joy. Sol Banyan Grande is created to let you experience that very same pleasure without sacrificing the conveniences that put the mind at ease.

The close distance from Candolim beach, the comforts of luxurious resort, and the precious privacy make these homes a reflection of all the conveniences and leisures that Goa has to offer.



A REVITALISING OUTLOOK
OF A TROPICAL PARADISE

EXPERIENCE THE SUPREME ELEGANCE OF AN INGENUOUS DESIGN

Enjoy the ever-changing hues of the skies while enjoying the company of loved ones. Here you find the lost sense of simple pleasures.





LIFE BLESSED WITH
THE LUSH VISTAS

ELEGANCE THAT
IS DESIGNED TO
CREATE A
DISTINCTIVE
IMPRESSION

INTUITIVE COMFORTS
THAT TOUCH YOUR HEART

An abundance of class apart amenities makes the Grande a matchless destination to unwind your body and rejuvenate your soul.

These residences, elegantly conceptualised as a blend of Portuguese aesthetic principles and urbane lifestyle, offer a splendid lifestyle adorned with rich comforts and exquisite design.

A modern villa at night with a swimming pool and lounge area. The villa features large glass windows and balconies, illuminated from within. The pool is lit with blue lights, and the lounge area has several chairs and a fire pit. The background shows a tropical landscape with palm trees under a dark sky.

A PLACE FOR PAMPERING

With serenity marvellously woven together with indulgence, the swimming pool offers a paradise of untold pleasures. The splashes of happiness take you to new heights of zest.



A HOME OF LUXE

The penthouse here is ideated as an epitome of luxury. Its spaciousness embraces the winds with wide open doors and creates endless possibilities of happy living.



LEGEND

- 01. ENTRANCE GATE
- 02. PARKING
- 03. PARTY LAWN
- 04. WALKWAY
- 05. DECK AREA
- 06. SWIMMING POOL

PLANNED
URBAN OASIS



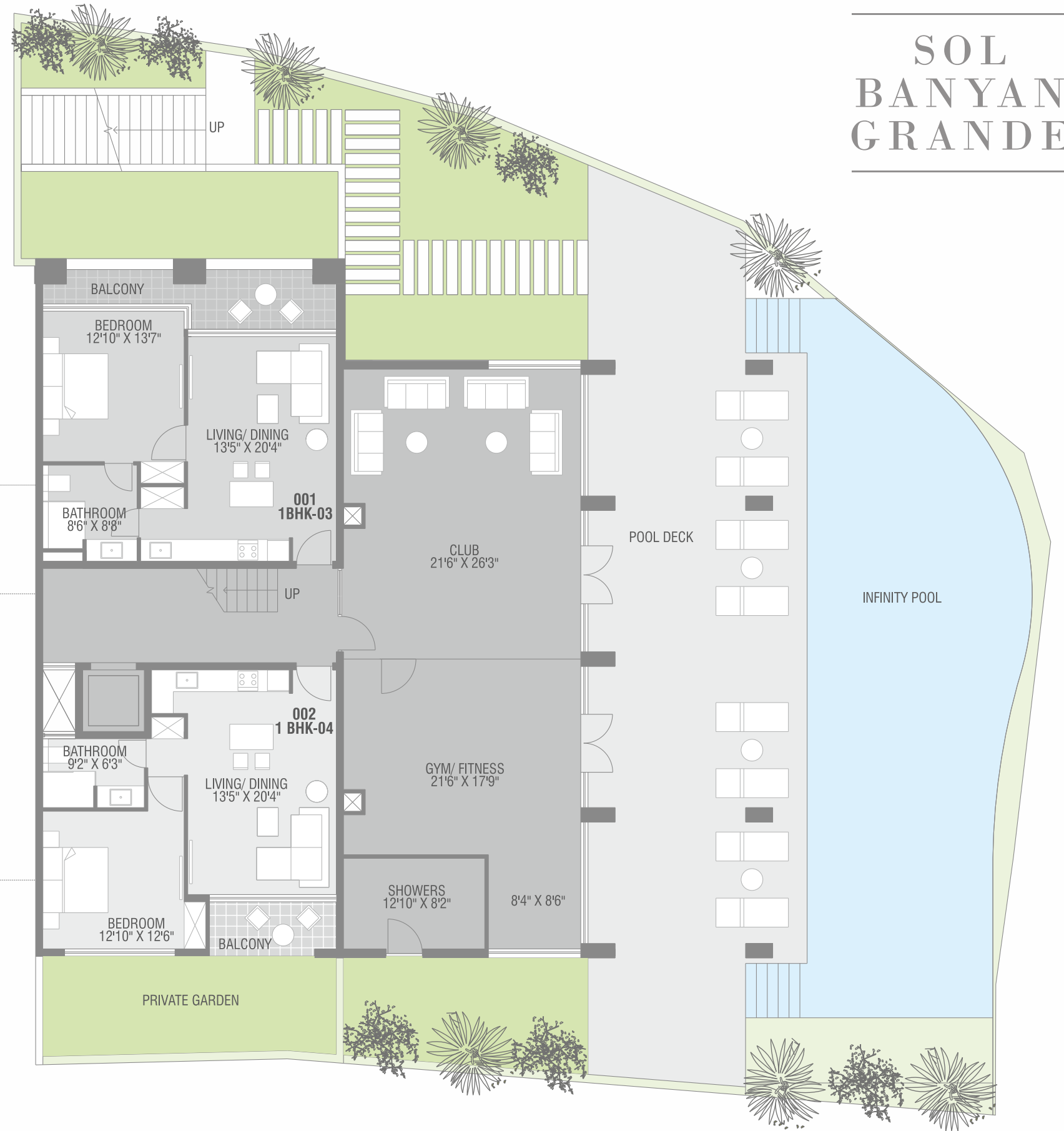
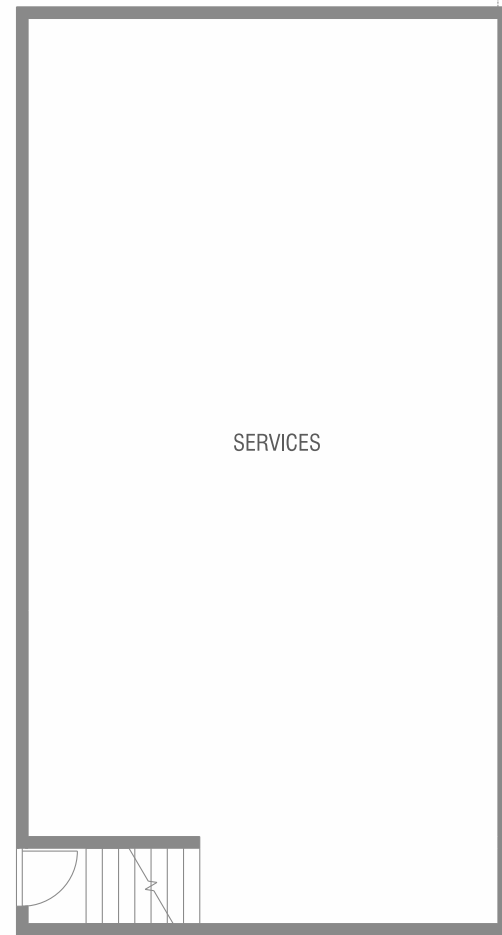
THE AFFLUENT
ELEMENTS THAT
OFFER FLAWLESS
LUXURY AS WELL
AS SERENITY

ENCHANTED AFFLUENCE EMBODIED IN AMBIENCE

Every minute aspect of these abodes has been embedded with thoughtful conveniences and opulent characteristics. The unparalleled splendour oozes through its rich and warm interiors. The pleasant interiors boast of a subtle yet unmistakable sense of hospitality throughout their environs.

May it be the ingenious lighting or the lush vegetation, these homes at Grande are sure to be perceived as a heavenly way of life.

SOL BANYAN GRANDE



AREA STATEMENT IN SQ.FT.

Unit No	Type	Carpet Area	Built-up Area	Super Built-Up Area +Incl. garden area
001	1BHK-03	651 ft ²	723 ft ²	882 ft ²
002	1BHK-04	596 ft ²	660 ft ²	883 ft ² Incl. garden area 233 ft ²



SOL BANYAN GRANDE

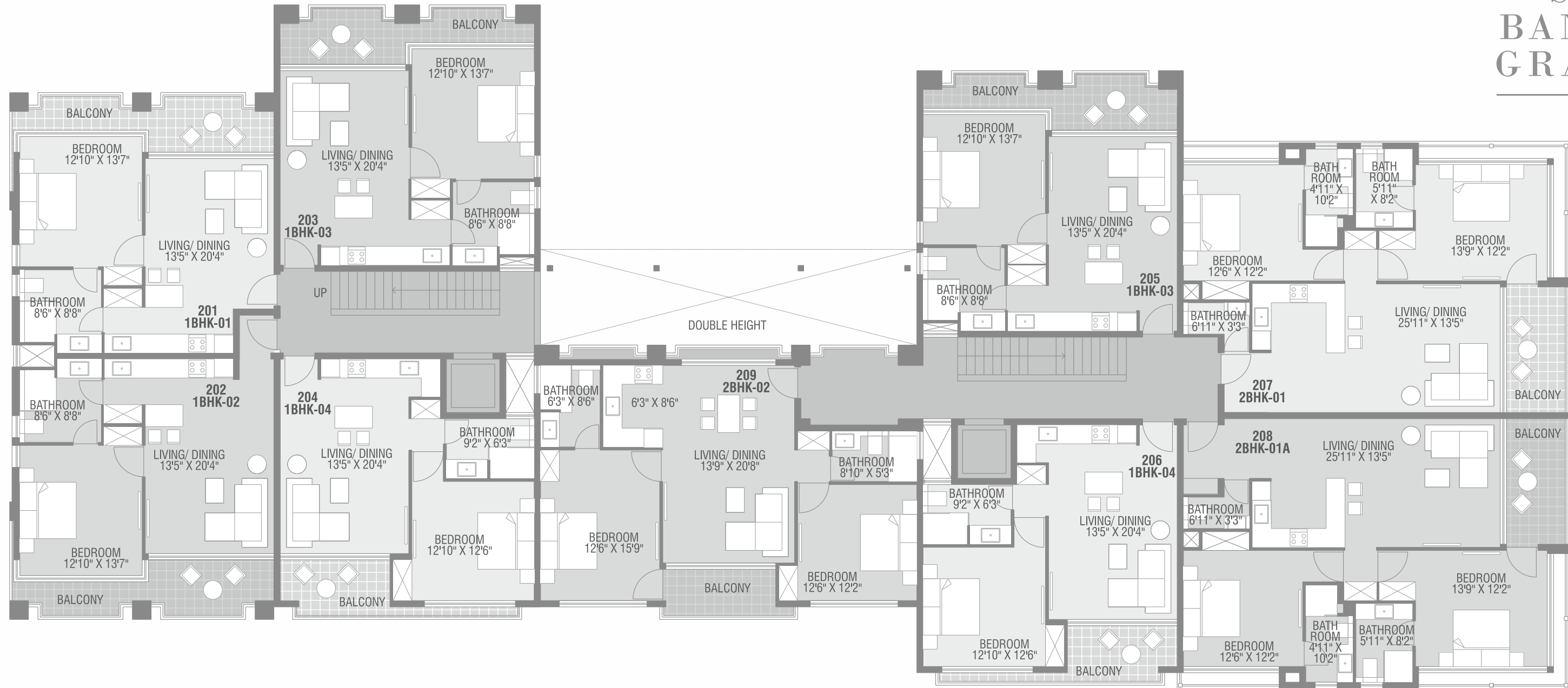


AREA STATEMENT IN SQ.FT.

Unit No	Type	Carpet Area	Built-up Area	Super Built-Up Area
101	1BHK-01	633 ft ²	700 ft ²	855 ft ²
102	1BHK-02A	625 ft ²	689 ft ²	893 ft ² Incl. garden area 158 ft ²
103	1BHK-03	651 ft ²	723 ft ²	882 ft ²
104	1BHK-04	596 ft ²	653 ft ²	879 ft ² Incl. garden area 247 ft ²
105	1BHK-03	662 ft ²	741 ft ²	905 ft ²
106	1BHK-04	616 ft ²	687 ft ²	838 ft ²
107	1BHK-05	567 ft ²	642 ft ²	784 ft ²
108	1BHK-05	567 ft ²	642 ft ²	784 ft ²
109	2BHK-02A	858 ft ²	934 ft ²	1283 ft ² Incl. garden area 433 ft ²



SOL BANYAN GRANDE

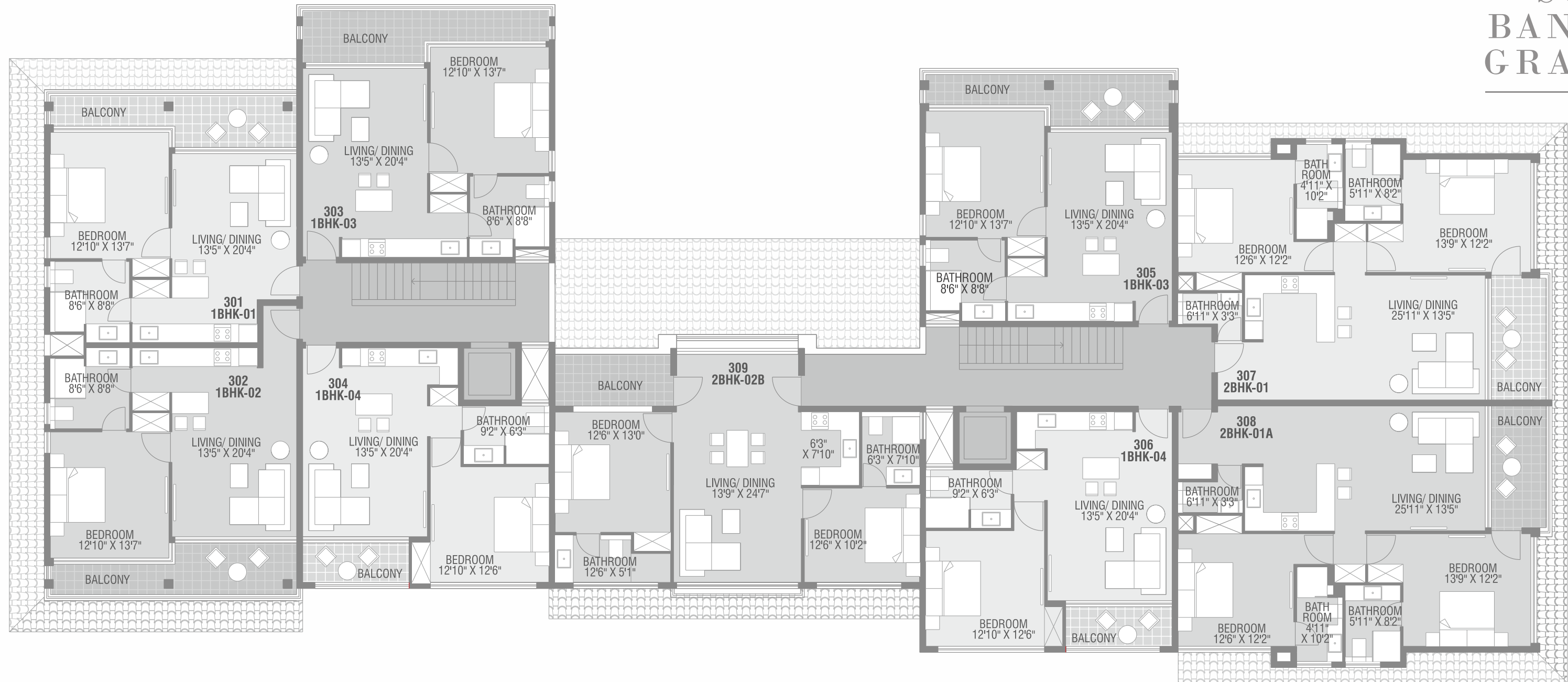


AREA STATEMENT IN SQ.FT.

Unit No	Type	Carpet Area	Built-up Area	Super Built-Up Area
201	1BHK-01	647 ft ²	724 ft ²	883 ft ²
202	1BHK-02	682 ft ²	763 ft ²	931 ft ²
203	1BHK-03	662 ft ²	744 ft ²	908 ft ²
204	1BHK-04	616 ft ²	685 ft ²	835 ft ²
205	1BHK-03	662 ft ²	744 ft ²	908 ft ²
206	1BHK-04	616 ft ²	687 ft ²	838 ft ²
207	2BHK-01	950 ft ²	1055 ft ²	1287 ft ²
208	2BHK-01A	981 ft ²	1089 ft ²	1328 ft ²
209	2BHK-02	870 ft ²	961 ft ²	1173 ft ²



SOL BANYAN GRANDE

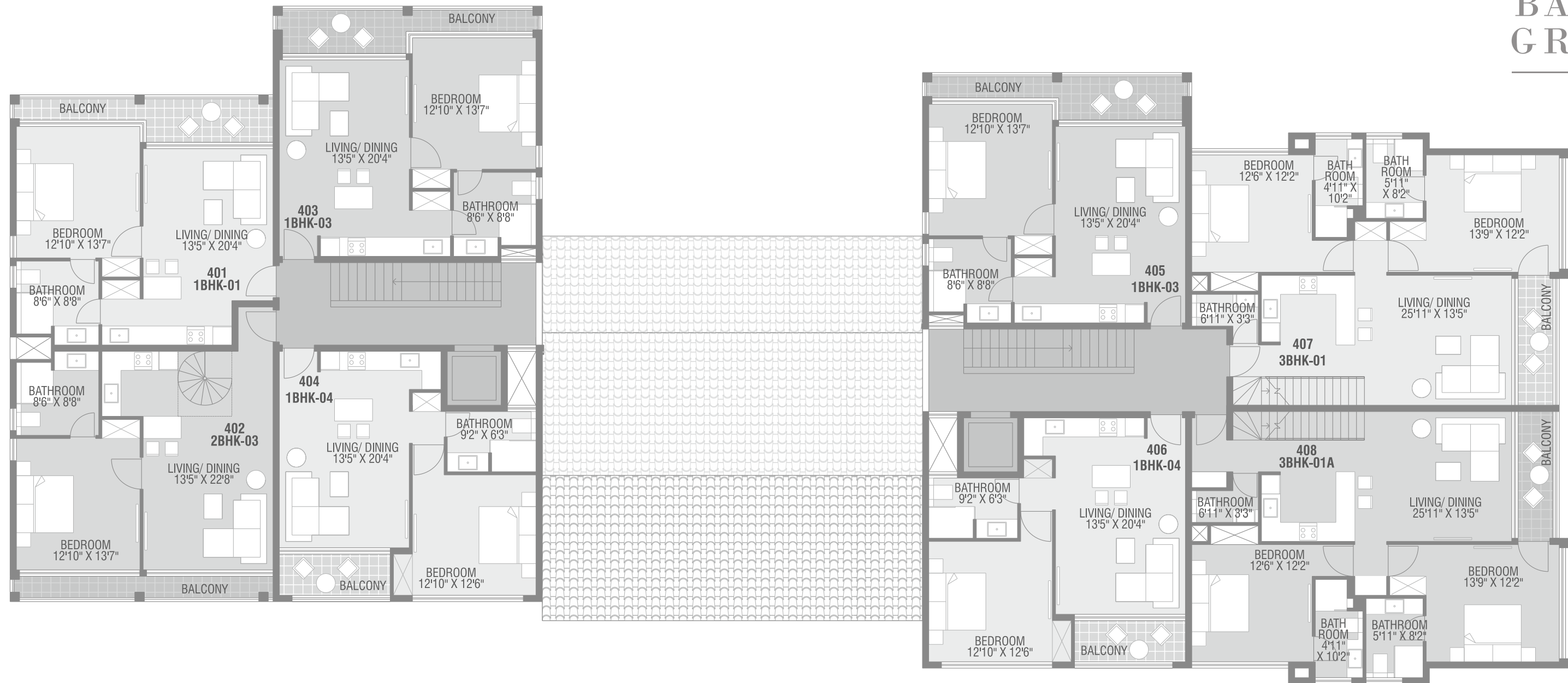


AREA STATEMENT IN SQ.FT.

Unit No	Type	Carpet Area	Built-up Area	Super Built-Up Area
301	1BHK-01	652 ft ²	700 ft ²	855 ft ²
302	1BHK-02	686 ft ²	739 ft ²	902 ft ²
303	1BHK-03	671 ft ²	723 ft ²	882 ft ²
304	1BHK-04	589 ft ²	653 ft ²	797 ft ²
305	1BHK-03	671 ft ²	723 ft ²	882 ft ²
306	1BHK-04	589 ft ²	655 ft ²	800 ft ²
307	2BHK-01	947 ft ²	1055 ft ²	1287 ft ²
308	2BHK-01A	978 ft ²	1089 ft ²	1328 ft ²
309	2BHK-02B	857 ft ²	951 ft ²	1160 ft ²



SOL BANYAN GRANDE

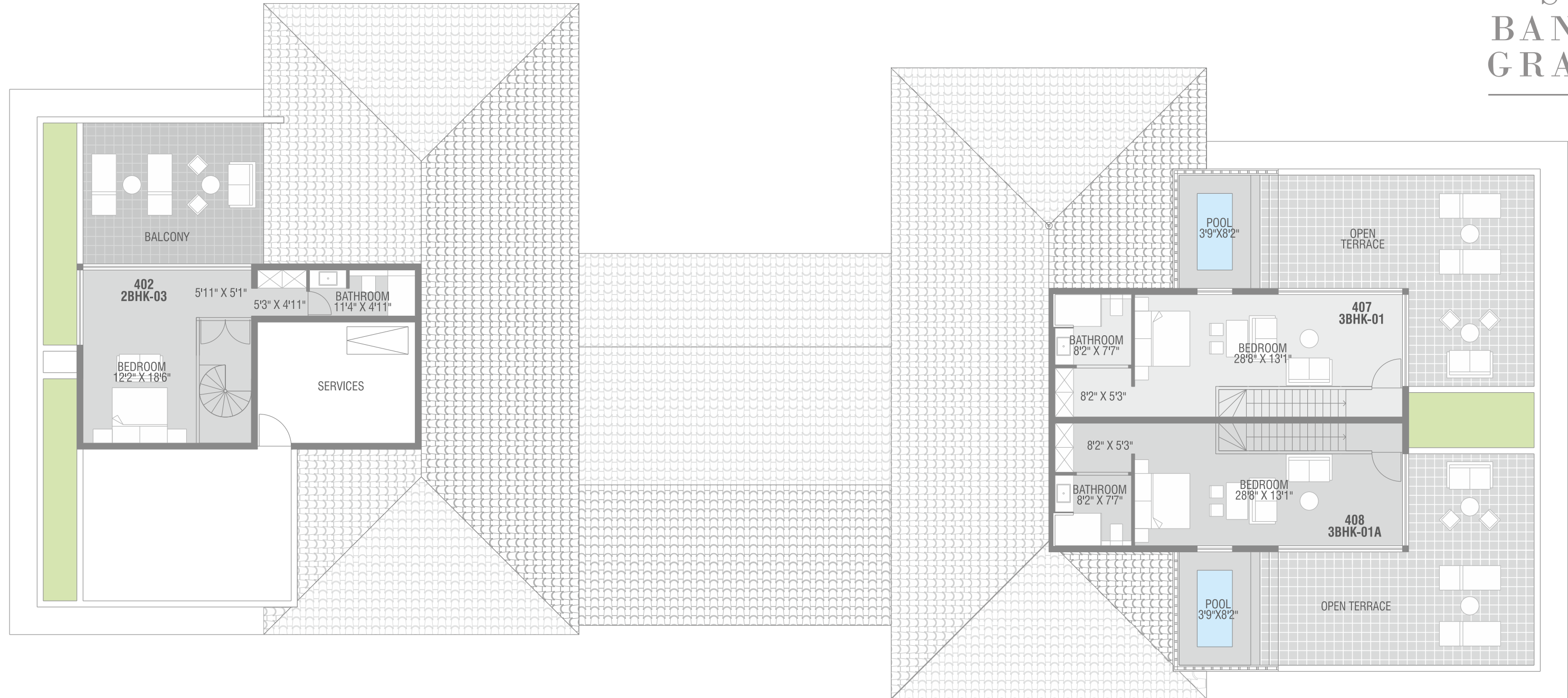


AREA STATEMENT IN SQ.FT.

Unit No	Type	Carpet Area	Built-up Area	Super Built-Up Area
401	1BHK-01	625 ft ²	700 ft ²	855 ft ²
402 [Penthouse]	2BHK-03	1037 ft ²	1184 ft ²	1602 ft ² Incl. open terrace area 315 ft ²
403	1BHK-03	644 ft ²	723 ft ²	882 ft ²
404	1BHK-04	592 ft ²	660 ft ²	805 ft ²
405	1BHK-03	644 ft ²	723 ft ²	882 ft ²
406	1BHK-04	592 ft ²	660 ft ²	805 ft ²
407 [Penthouse]	3BHK-01	1357 ft ²	1526 ft ²	2193 ft ² Incl. open terrace area 660 ft ²
408 [Penthouse]	3BHK-01A	1388 ft ²	1560 ft ²	2234 ft ² Incl. open terrace area 660 ft ²



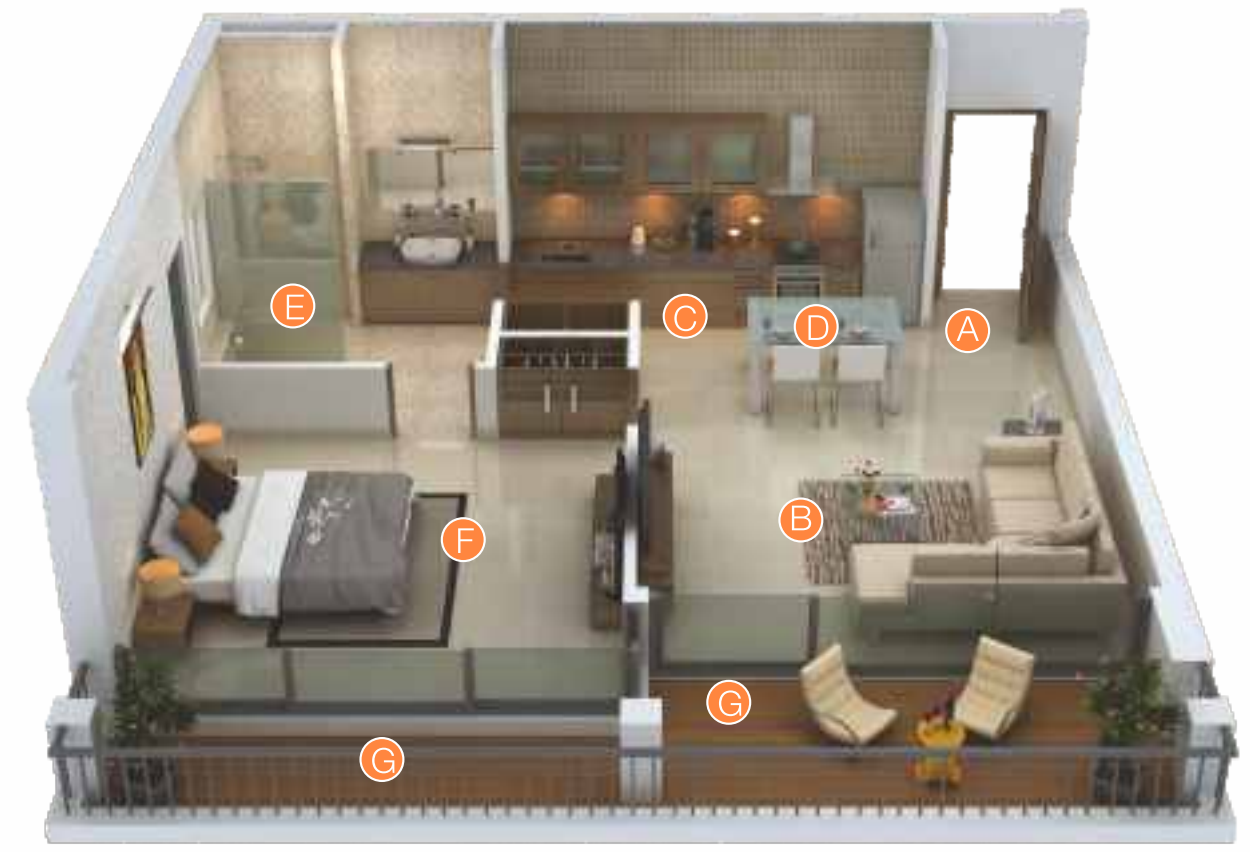
SOL
BANYAN
GRANDE



SOL
BANYAN
GRANDE



2 BHK APARTMENT



1 BHK APARTMENT



2 BHK APARTMENT

LEGEND

A	ENTRANCE	E	BATHROOM
B	LIVING	F	BEDROOM
C	KITCHEN	G	TERRACE
D	DINING		

UNMATCHED FEATURES OF A LUXURIOUS LIVING

AMENITIES

- Double height entrance lobby with lounge seating and decorative lighting
- Infinity pool with attached toddler's pool
- Pool showers and changing rooms
- Double height covered pool deck area
- Well-designed open spaces with lush landscaping and lighting
- Children's play area
- Indoor club area with Gym, lounge and library corner
- Facility manager office with restroom facility
- Dedicated services area
- Eco-features such as gray water recycling, energy saving light fixtures

SPECIFICATIONS

FLOORING

- Vitrified tile flooring for Living areas and Bedrooms
- Anti-skid vitrified tile flooring for Balconies & terraces
- Anti-skid vitrified tile flooring for Bathrooms

DOORS & WINDOWS

- Main door with Veneer finish and Mortise lock
- All other doors in veneer/laminate with Mortise lock
- Toilet door shutters with wet side laminate
- Anodized aluminium windows/ external doors with clear toughened glass

KITCHEN

- Modular kitchen with sink and tap
- Vitrified tile dado up to 2' above granite counter
- Provision for washing machine, water purifier & chimney
- Piped gas connection

BATHROOMS

- Branded CP & Sanitary fittings (Toto or equivalent)
- Vitrified tile dado up to ceiling
- Glass partition for shower
- Geysers and exhaust fan
- Shower panel in select apartments

PRIVATE TERRACES

- SS railing with toughened glass
- Plunge pool and deck for select penthouses

WALLS & PAINTS

- Gypsum plaster finish for all internal walls
- Plastic Emulsion, Low VOC paint in all rooms
- Weather proof paint for external walls

ELECTRICAL

- Concealed PVC conduits with copper wiring and MCB/ELCB
- Modular switches of reputed make (Legrand or equivalent)
- 100% DG backup for lifts, corridors, pumps and common area lighting
- TV, telephone and internet points provisions
- Inverter provision

PLUMBING

- Pressure tested concealed CPVC internal plumbing
- Hydro-pneumatic water supply system

AIR-CONDITIONING

- Provisions for Split air-conditioning units in living room and bedrooms

ELEVATOR

- Automatic elevators with ARD

SECURITY & SAFETY

- Intercom & video door phone calling with panic button
- 24 hr round the clock security personnel
- CCTV surveillance in all common areas
- Fire safety with fire extinguisher and hose reel at every level

BUILDING

- RCC framed structure conforming to Seismic Zone III requirements and Solid block masonry
- External walls with double coat cement plaster and internal walls with single coat cement plaster
- Damp-proofing and Anti-termites treatment
- Waterproofing of bathrooms, terraces and roofs
- MS railings for balconies and staircases

OUTDOOR

- Centralized garbage collection system
- Sewage treatment plant and UG tank
- Landscaping with outdoor lighting

ADDITIONAL INTERIOR PACKAGE ALSO AVAILABLE



SUN ESTATE DEVELOPERS

Sun Estates combine age old principles with modern sensibilities.

Sun Estates are unique amongst developers who understand the need for a contemporary aesthetic in Goa's architecture and are committed to the development and building of high end luxury homes in Goa, by drawing inspiration from the strong Goan tradition. There is an uncompromising emphasis on quality and detail for each and every development. One can experience the trademark sophistication in every aspect of the properties and with every project, Sun Estates continues to raise the bar of luxury living, consistently.

An exceptional involvement among all the enlightened architects from across the world, who work effortlessly to create the best, right from creating modern compositions of colour, texture and form to the materials and fittings that are to be used, so also the quality of construction, is of high grade so as to satisfy the aesthetic sensibility of the most discerning clientele.

Sun Estates has received tremendous accolades and acknowledgement from its clients for outstanding products, quality and reliability. Its reputation is impeccable, driven by trust, integrity and quality. Sun Estates brings you The Hilton, located at Saipem, Goa. The Hilton has richly-appointed 104 guest rooms and suites and multiple dining options that will set this property above others.