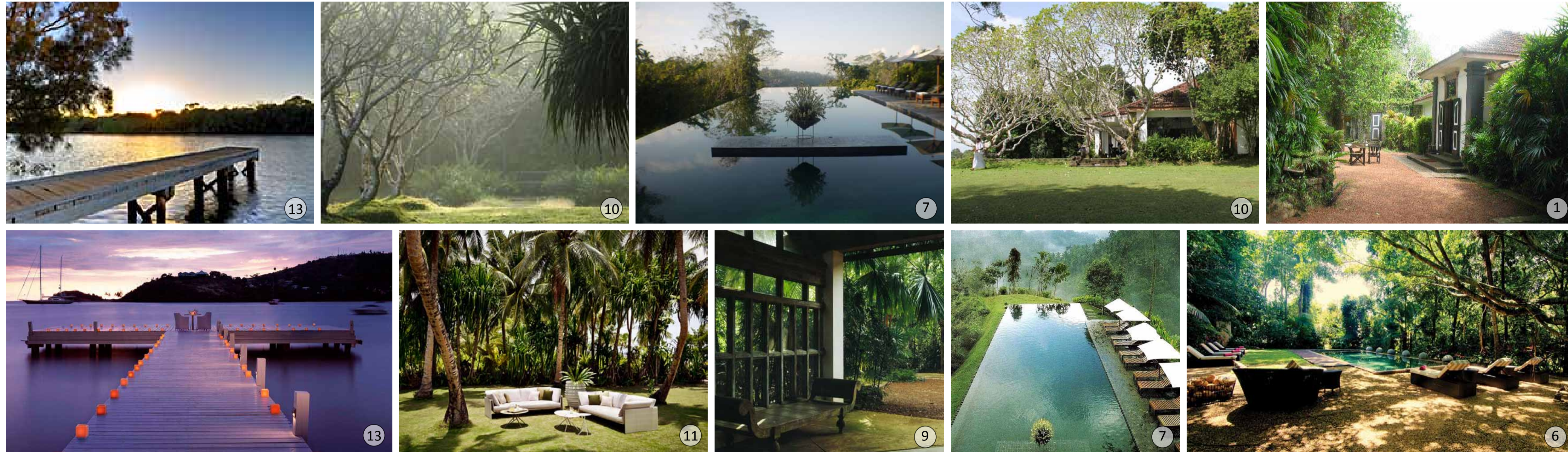


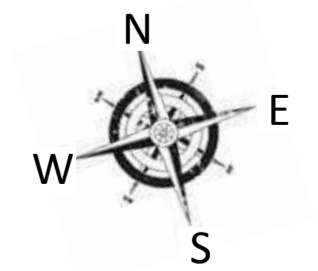
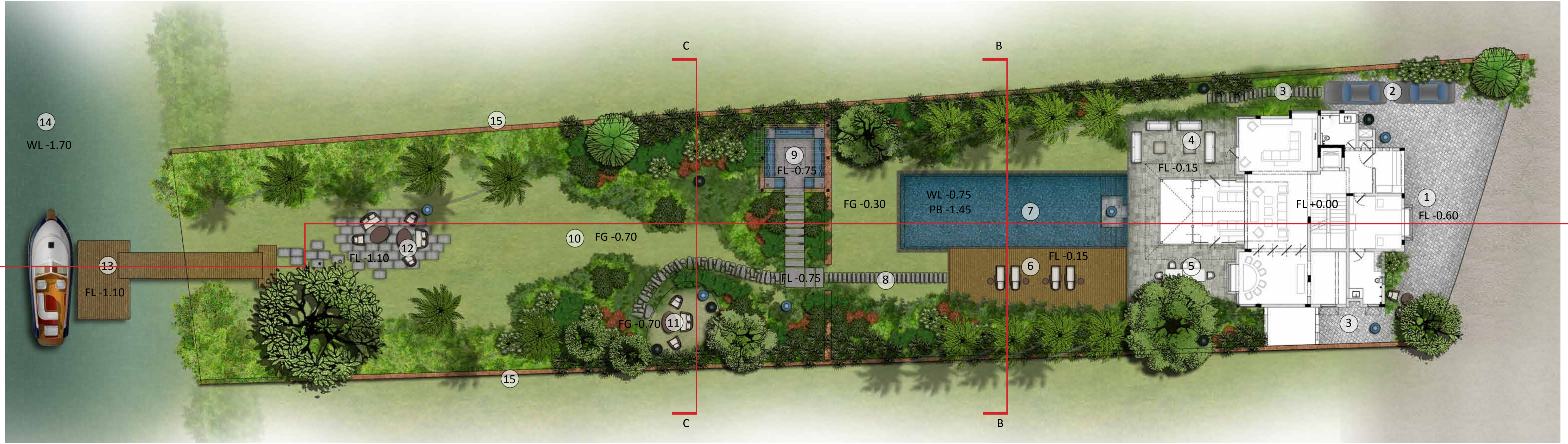


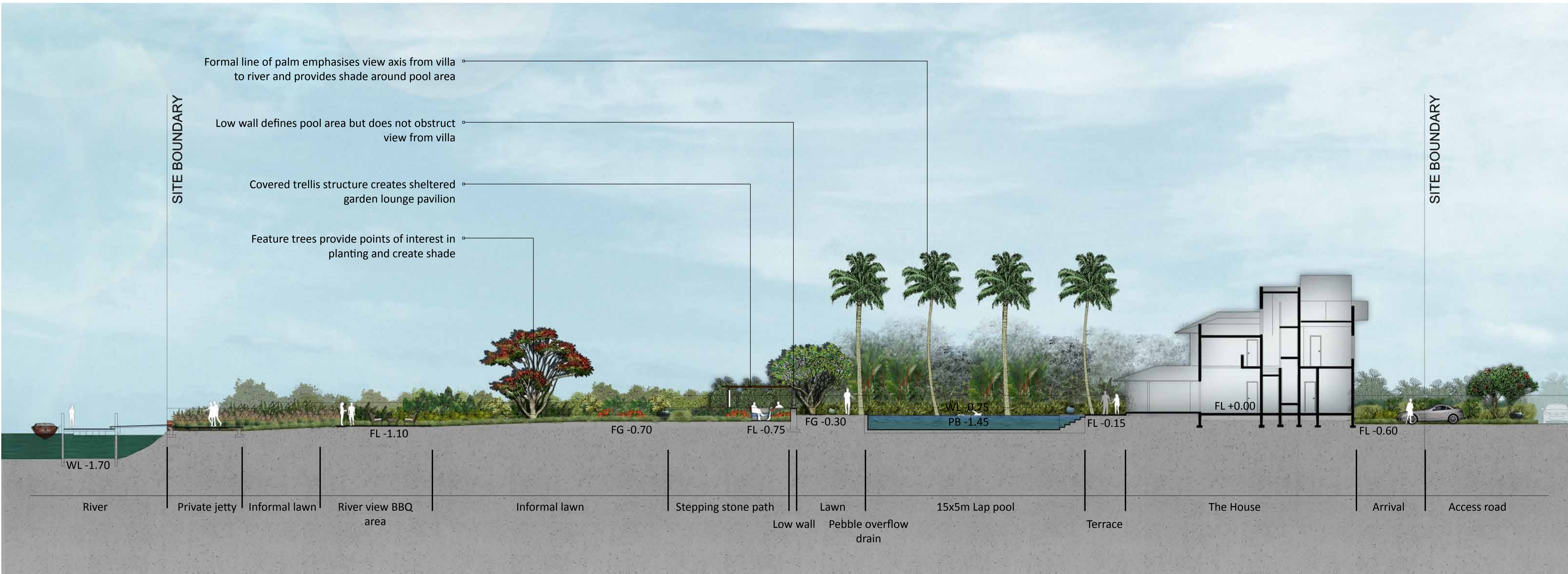
Riverfront villa, Goa, India

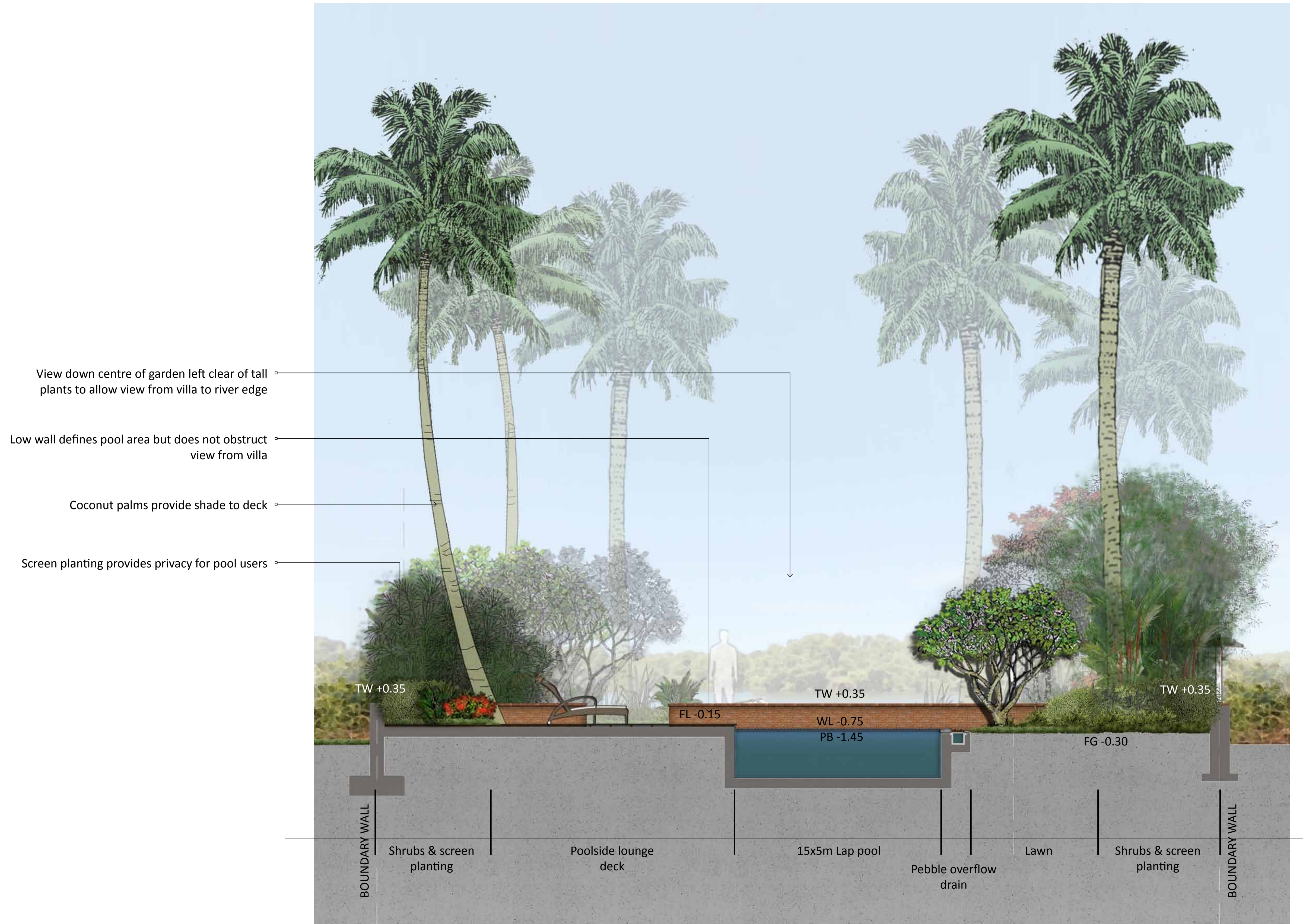
FINAL CONCEPT DESIGN - 17TH APRIL 2014

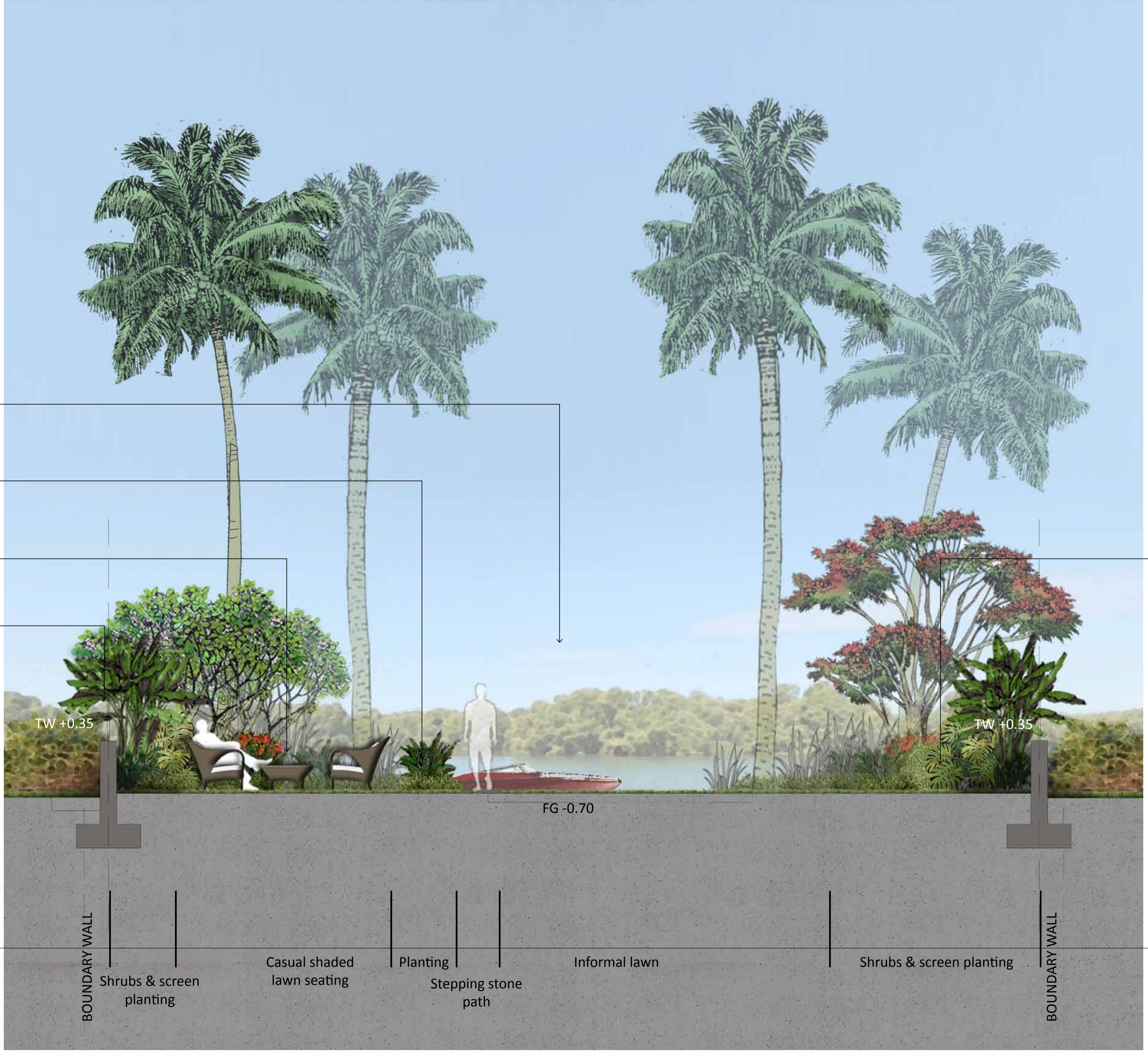


- LEGEND**
1. Lush green informal arrival
 2. Car parking
 3. Service access path
 4. Lounge terrace
 5. Dining terrace
 6. Shaded pool side lounge deck
 7. 15x5m lap pool
 8. Stepping stone garden path
 9. Trellis covered garden lounge
 10. Informal lawn
 11. Casual shaded lawn seating
 12. River edge stone deck and BBQ area
 13. Private jetty
 14. Nahul river
 15. Boundary wall









View down centre of garden left clear of tall plants to allow view from villa to river edge

Variety of accent planting used to create interest and enhanced natural feel to planting

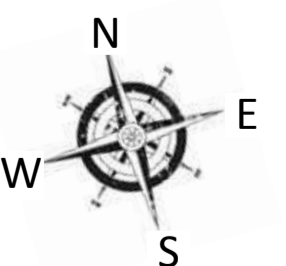
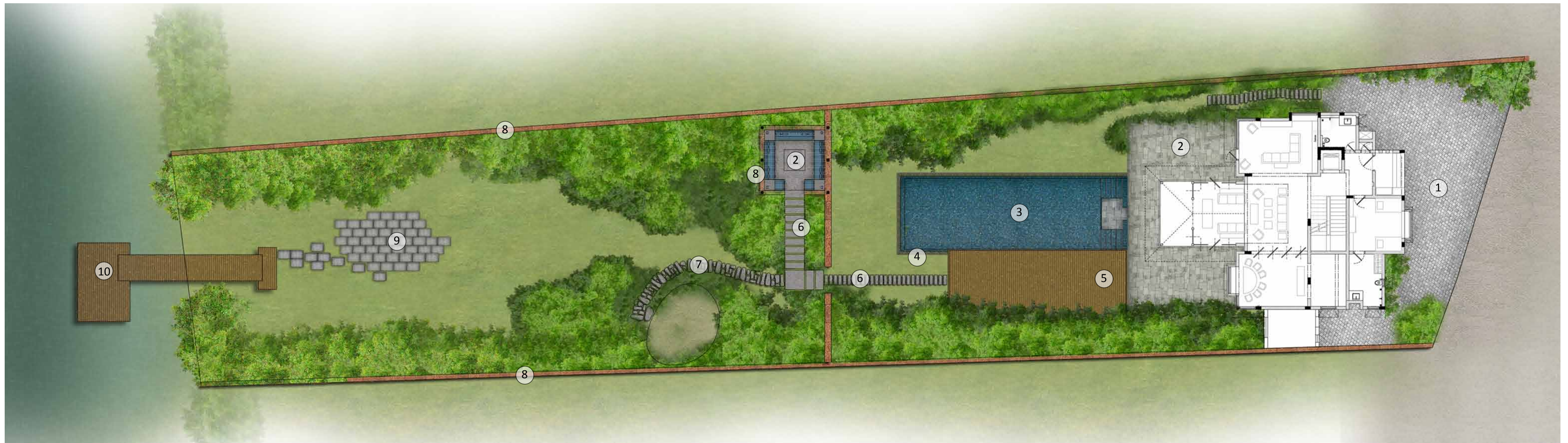
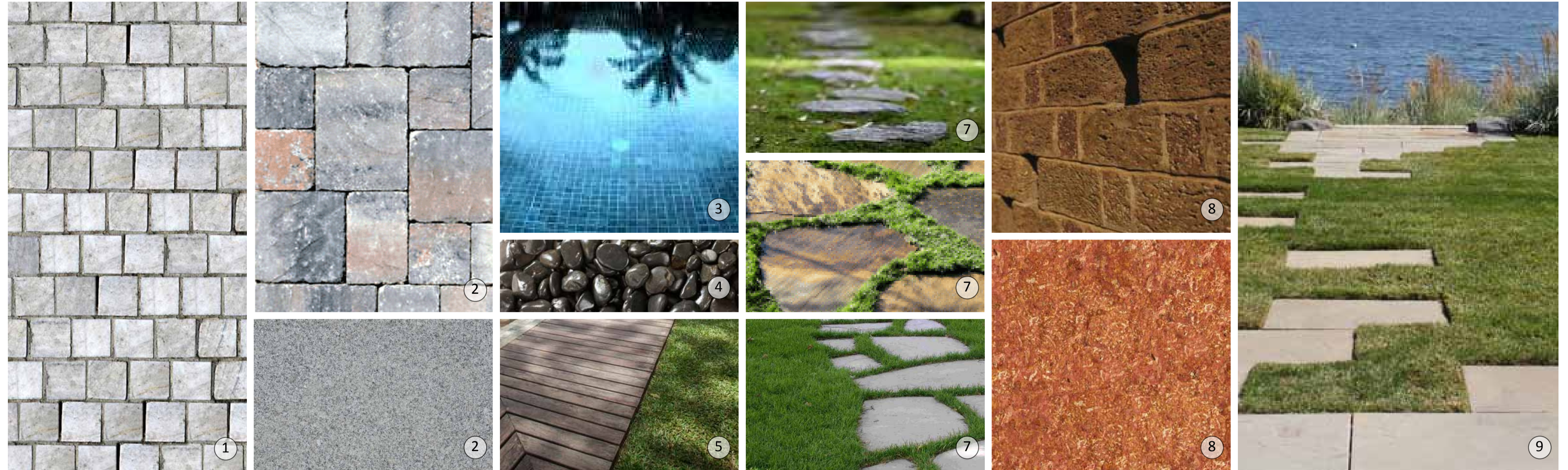
Casual seating in planted area creates a secluded garden lounge space

Screen planting provides privacy

Layers of planting create lush feel to the landscape

LEGEND

1. 90x90mm Granite cobble driveway
2. Random size granite set terrace
3. 50x50mm Deep aqua ceramic pool tiles
4. Black pebble banding over pool drain
5. Timber deck
6. Flagstone granite stepping stones
7. Large random size granite stepping stones
8. Laterite clad low wall
9. Large format granite pavers with grass joints
10. Timber jetty deck



LEGEND

- 1. Coloured pots
- 2. Stone artwork
- 3. Rustic plant pots
- 4. Poolside chaise lounge
- 5. Terrace loungers
- 6. Outdoor dining table and chairs



1



2



3



7



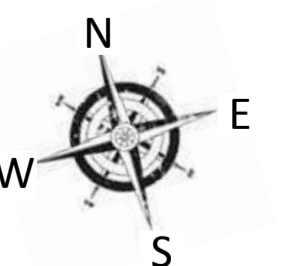
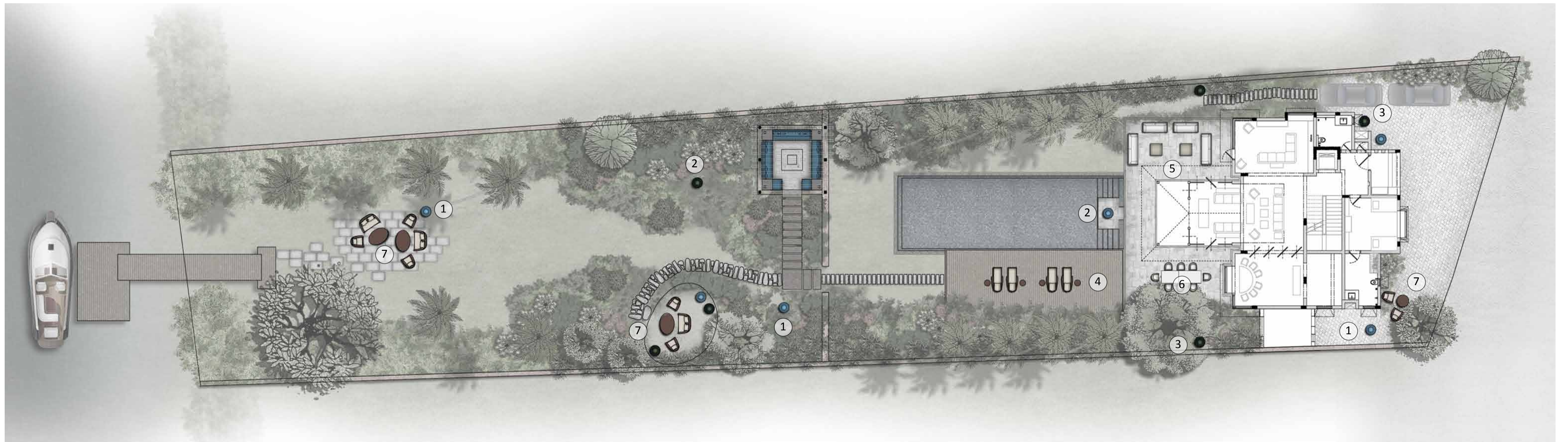
4



5



6



RIVERFRONT VILLA

GOA . INDIA

FINAL CONCEPT DESIGN - 17TH APRIL 2014



LANDSCAPE ARCHITECTS

45 GENTING LANE #04-01 GENTING WAREHOUSE SINGAPORE 349557 +65 6846 2588

OFF&E PLAN

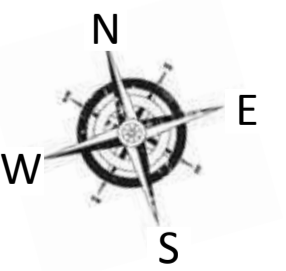
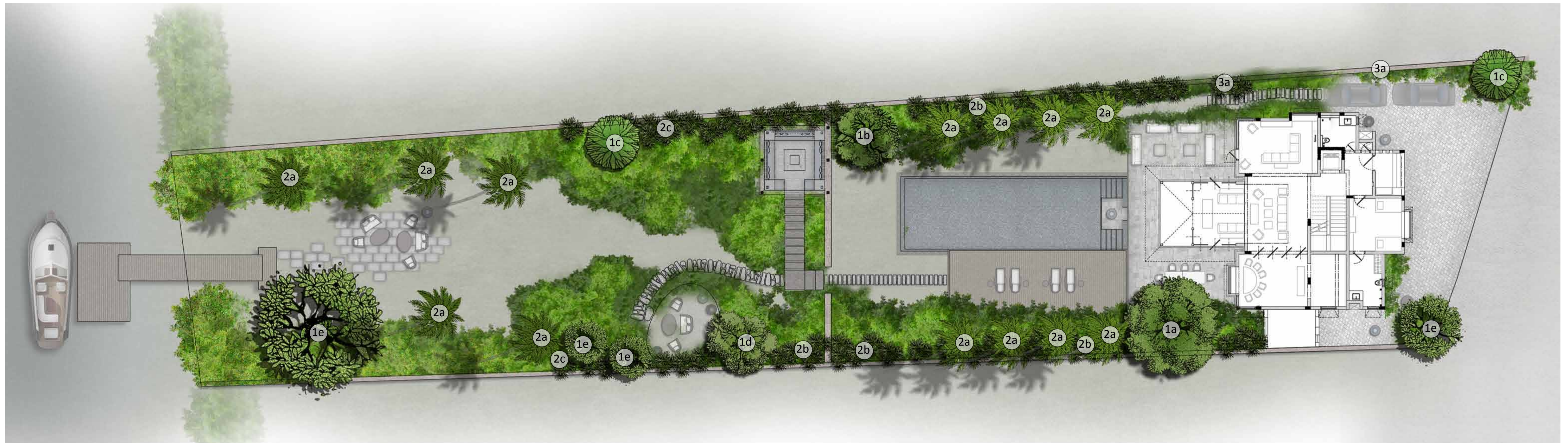
1:150 @ A1

LEGEND

- 1. TREES
- 1a Ficus Benghalensis
- 1b Mangifera indica
- 1c Butea monosperma
- 1d Coccotheca uvifera
- 1e Plumeria Obtusa

- 2. PALMS
- 2a Cocos nucifera
- 2b Cyrtostachys lakka
- 2c Chamaedorea erumpens

- 3. BAMBOO
- 3a Bambusa arundinacea



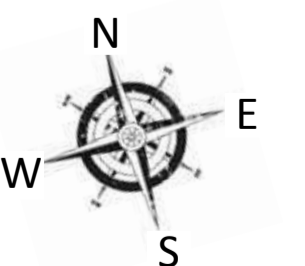
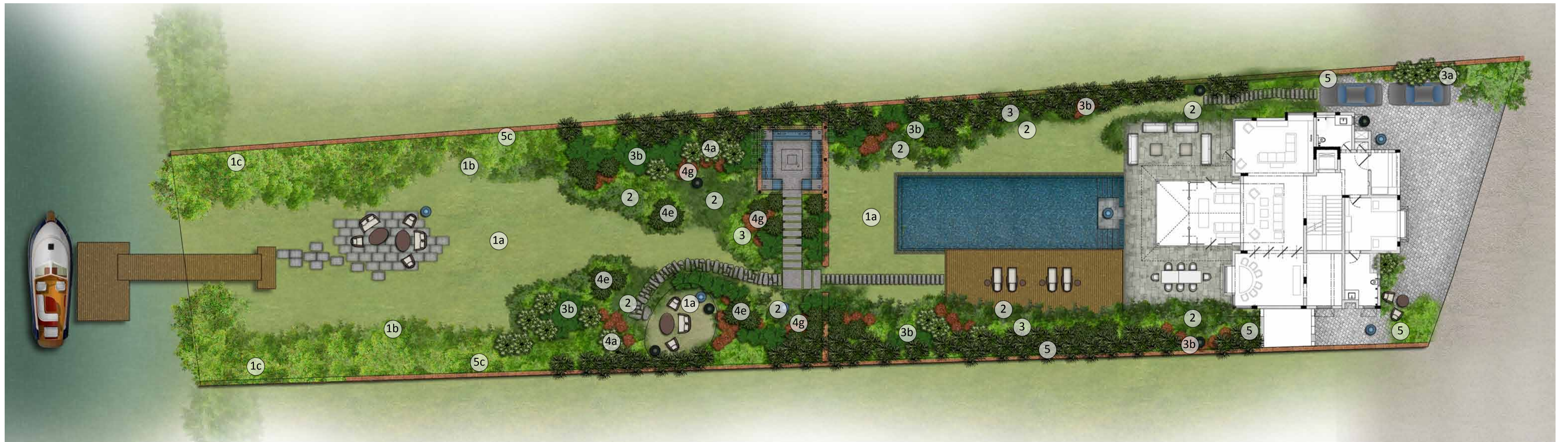
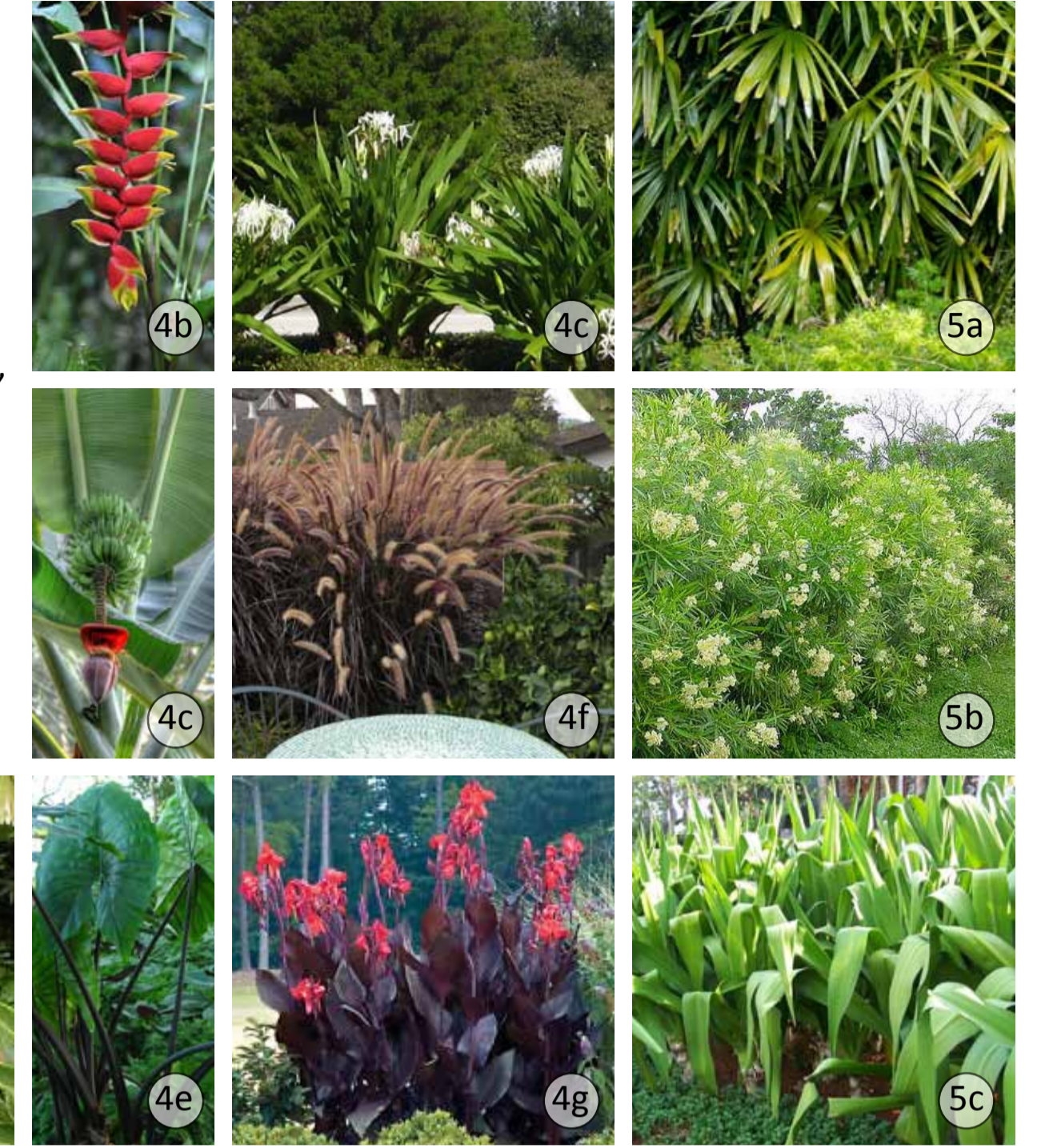
LEGEND

- 1. GRASSES
 - 1a Lawn
 - 1b Pennisetum alopecuroides
 - 1c Arundo donax
- 2. GROUNDCOVERS
 - 2a Ophiopogon japonicus nana
 - 2b Ophiopogon jaburan
 - 2c Pandanus amaryllifolius
 - 2d Tradescantia spathacea
 - 2e Phyllanthus myrtifolius
 - 2f Selaginella plana
- 3. SHRUBS
 - 3a Cassia alata
 - 3b Monstera deliciosa
 - 3c Caesalpinia pulcherrima
 - 3d Dieffenbachia
 - 3e Cordyline fruticosa 'lemon lime'
 - 3f Calathea zebrina
 - 3g Duranta 'dwarf gold'



LEGEND

- 4. ACCENTS
 - 4a Licuala Peltata
 - 4b Heliconia Rostrata
 - 4c Musa acuminata
 - 4d Alocasia 'Black Widow'
 - 4e Crinum amabile
 - 4f Pennisetum setaceum 'Rubrum'
 - 4g Canna indica 'Purpurea'
- 5. SCREEN PLANTING
 - 5a Rhapsis excelsa
 - 5b Nerium oleander
 - 5c Crinum amabile



RIVERFRONT VILLA

GOA . INDIA

FINAL CONCEPT DESIGN - 17TH APRIL 2014



LANDSCAPE ARCHITECTS
45 GENTING LANE #04-01 GENTING WAREHOUSE SINGAPORE 349557 +65 6846 2588

SHRUBS & GROUNDCOVERS PLAN

1:150 @ A1

LEGEND

1. Tree mounted 'moon' lights
2. Pool lighting
3. Decorative lanterns
4. Pathway down lighting
5. Decorative hanging lanterns
6. Feature tree uplighting
7. Jetty safety lighting
8. Artwork lighting

